

NOTES

**OPENING STROKE**

110° ± 10°

**TORQUE**

OPEN: 621g/mm  
CLOSE: 1001g/mm

**STANDARD PANEL**

DOOR WEIGHT: 10g <sup>②</sup>  
10g DOOR OPENS IN 0.35 ± 0.2S

ISSUE	DATE	SIG	REMARKS
1	07/01/06		SALES DRAWING
2	20/01/06		STD DOOR DATA UPDATED

THIRD ANGLE PROJECTION  
ALL DIMENSIONS IN MM

SCALE 2:1 UNLESS SPECIFIED	MATERIAL	POM / PC / SUS
	COLOUR	BLACK
	TOLERANCE	NOT SPECIFIED

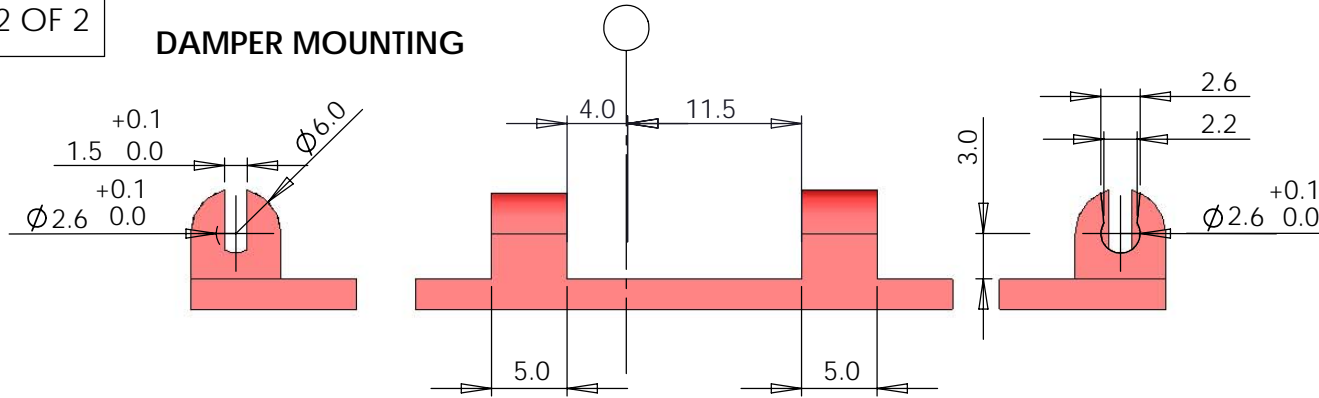
© Tech-Fast.Com Limited  
THESE DRAWINGS AND THE SPECIFICATIONS, AND THE DATA CONTAINED THEREIN ARE THE PROPERTY OF TECH-FAST.COM LIMITED, ISSUED IN STRICT CONFIDENCE AND SHALL NOT WITHOUT PRIOR WRITTEN PERMISSION OF TECH-FAST.COM LIMITED BE PRODUCED, COPIED OR USED FOR ANY PURPOSE WHATSOEVER, EXCEPT THE MANUFACTURE OR ARTICLES FOR TECH-FAST.COM LIMITED.

**TECH-FAST.COM**  
email: sales@tech-fast.com  
web: www.tech-fast.com

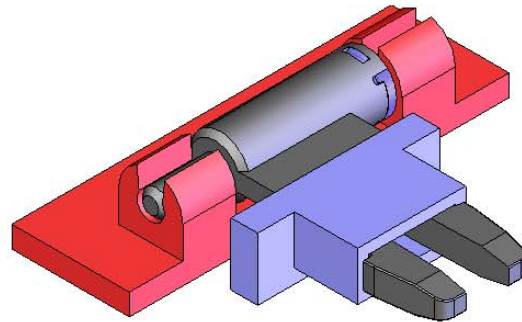
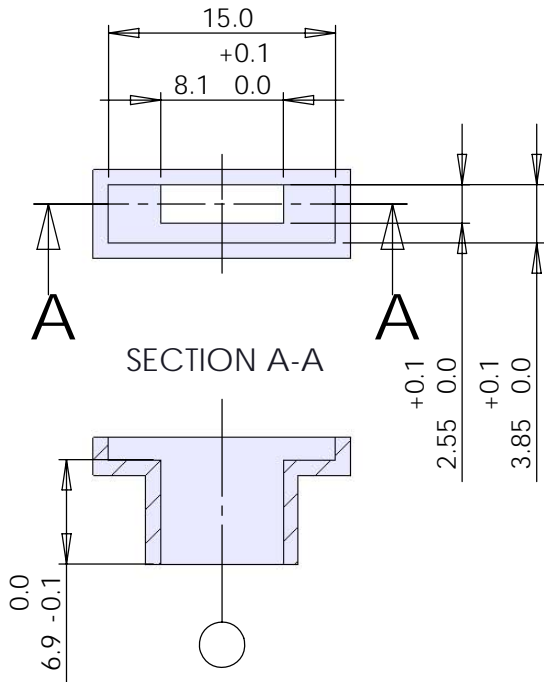
DRAWN	CJD
DATE	20/01/06

DESCRIPTION	PART No.
HINGE CLIP DAMPER	TF0305059

**DAMPER MOUNTING**



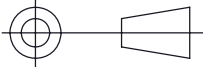
**CLIP MOUNTING**



**NOTES**

**MOUNTING DETAILS**

ISSUE	DATE	SIG	REMARKS
1	07/01/06		SALES DRAWING
2	20/01/06		STD DOOR DATA UPDATED

THIRD ANGLE PROJECTION  
  
 ALL DIMENSIONS IN MM

SCALE  
 2:1  
 UNLESS SPECIFIED

MATERIAL POM / PC / SUS  
 COLOUR BLACK  
 TOLERANCE NOT SPECIFIED

© Tech-Fast.Com Limited

THESE DRAWINGS AND THE SPECIFICATIONS, AND THE DATA CONTAINED THEREIN ARE THE PROPERTY OF TECH-FAST.COM LIMITED, ISSUED IN STRICT CONFIDENCE AND SHALL NOT WITHOUT PRIOR WRITTEN PERMISSION OF TECH-FAST.COM LIMITED BE PRODUCED, COPIED OR USED FOR ANY PURPOSE WHATSOEVER, EXCEPT THE MANUFACTURE OR ARTICLES FOR TECH-FAST.COM LIMITED.

**TECH-FAST.COM**  
 email: sales@tech-fast.com  
 web: www.tech-fast.com

DRAWN CJD  
 DATE 20/01/06

DESCRIPTION PART No.  
 HINGE CLIP DAMPER TF0305059