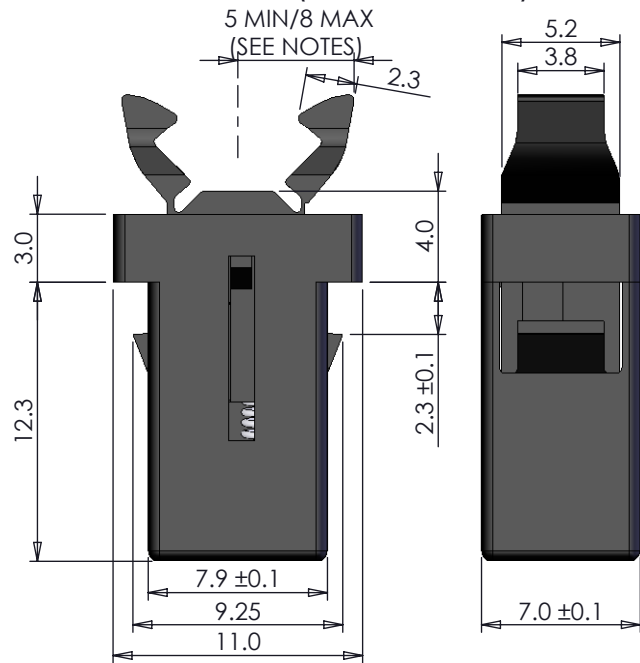
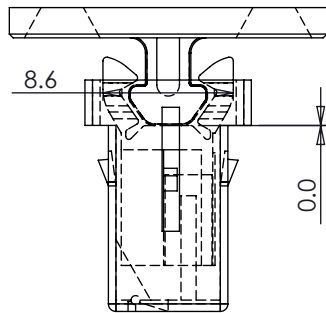


LATCH OPEN
(AS DELIVERED)

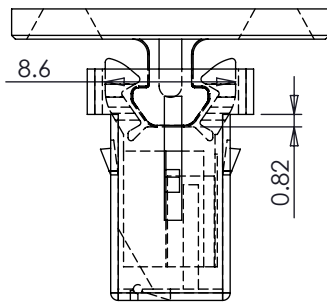


LATCH CLOSED



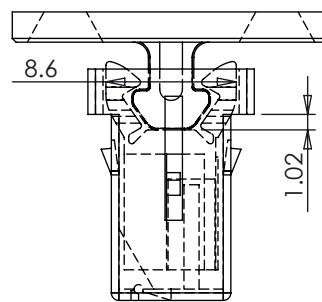
2:1

LATCH IN
DELATCH POSITION



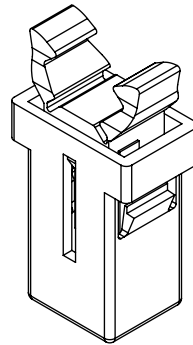
0.82

LATCH IN
BOTTOM POSITION



1.02

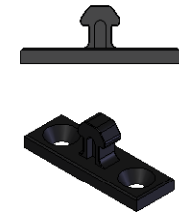
PART No.	COLOUR	HOLE SIZE	PANEL RANGE		HEAD HEIGHT
			MIN	MAX	
TF0305001A-BLK	BLACK	7.0 x 8.0	2.0	2.0	3.0
TF0305001A-WTE	WHITE	7.0 x 8.0	2.0	2.0	3.0



2:1

NOTES

WEIGHT: 0.75g
TO BE USED WITH MALE STRIKE TF0305008



1:1

CLOSING/OPENING FORCE:
500g ± 60g

IT IS PERMISSABLE TO MANUALLY
REALIGN THE JAWS IF THEY ARE OUT OF
TOLERANCE

ISSUE	DATE	SIG	REMARKS
1	17/04/07		SALES DRAWING
2	01/02/08		MATERIALS MODIFIED, ADDITIONAL SHEETS ADDED
3	20/04/08		ADDITIONAL SHEET ADDED
4	28/04/08		ADDITIONAL VIEWS ADDED TO SHEET 2
5	05/01/09		SHEET 2 REMOVED, 9.25 ADDED, 2.3±0.1 ADDED, 5 MIN/8 MAX ADDED, NOTES ADDED

THIRD ANGLE PROJECTION
ALL
DIMENSIONS
IN MM

SCALE
3:1
UNLESS SPECIFIED

MATERIAL PA66 / PC-ABS / SUS
COLOUR SEE CHART
TOLERANCE GEN. TOL. ± 0.2 UNLESS SPECIFIED

© Tech-Fast (A Division of GBK UK Ltd)

THESE DRAWINGS AND THE SPECIFICATIONS, AND THE DATA CONTAINED THEREIN ARE THE PROPERTY OF TECH-FAST (A DIVISION OF GBK UK LTD). ISSUED IN STRICT CONFIDENCE AND SHALL NOT WITHOUT PRIOR WRITTEN PERMISSION OF TECH-FAST (A DIVISION OF GBK UK LTD) BE PRODUCED, COPIED OR USED FOR ANY PURPOSE WHATSOEVER, EXCEPT THE MANUFACTURE OR ARTICLES FOR TECH-FAST (A DIVISION OF GBK UK LTD).

TECH-FAST.COM
email: sales@tech-fast.com
web: www.tech-fast.com

DRAWN CJD
DATE 05/01/09

DESCRIPTION PART No.
PUSH-PUSH LATCH TF0305001A